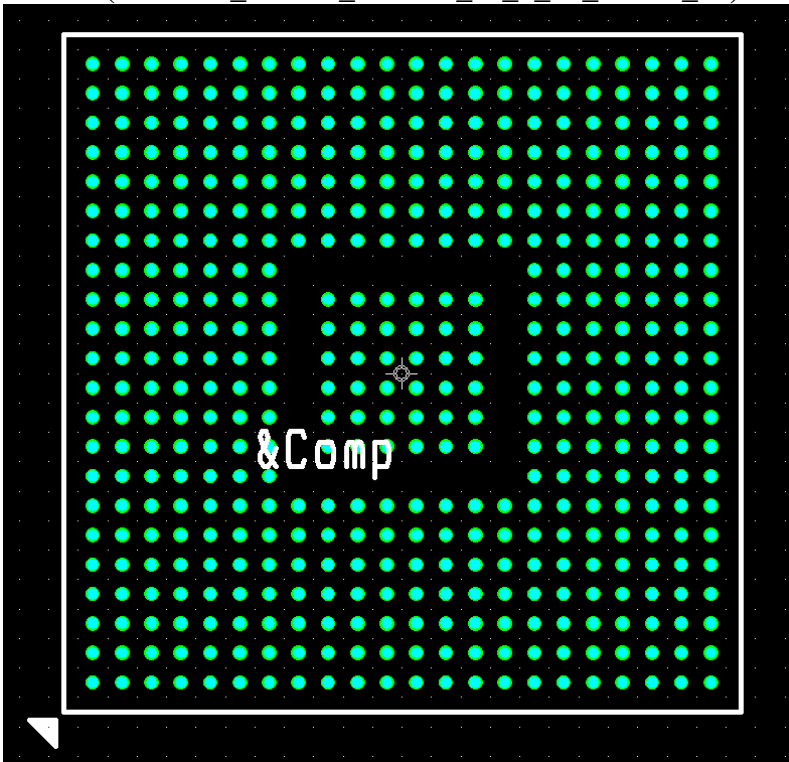


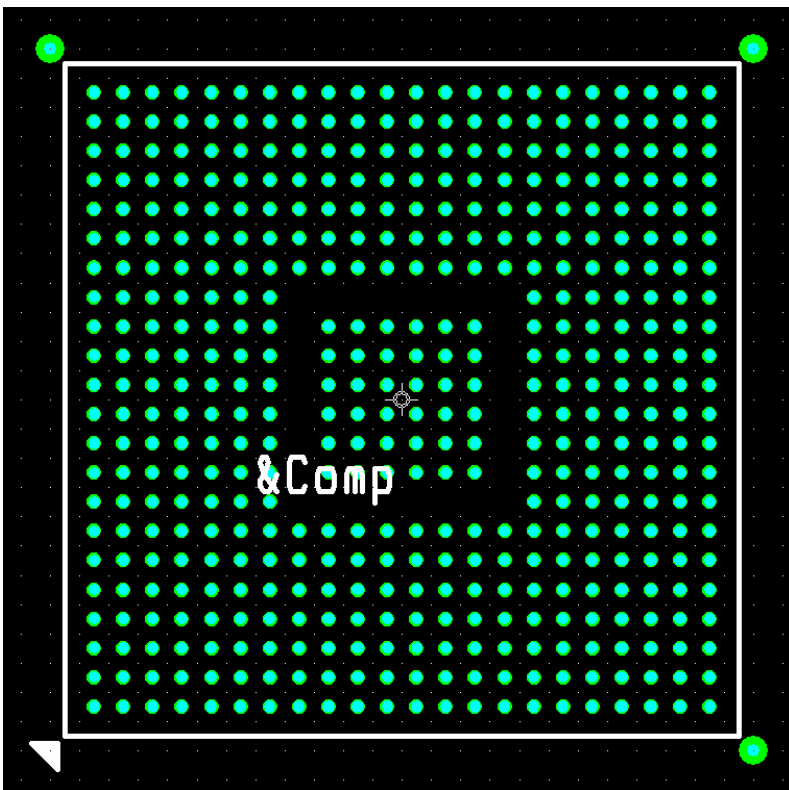
## **Xilinx Footprint Library for Cadence Orcad 9.2 to 10.5**

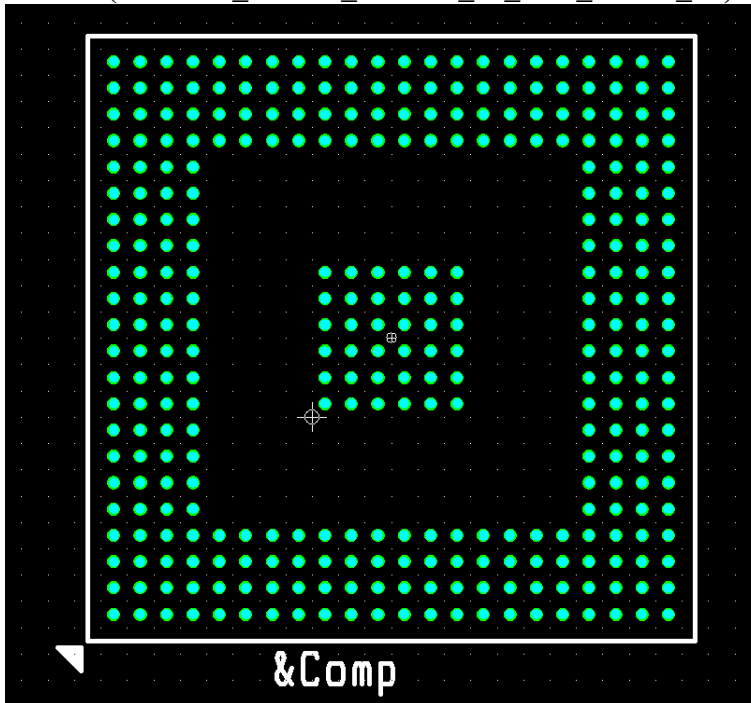
The library Xilinx\_ALL.LLB contains the following footprints:

1. FG456            –page 2
2. FG324           –page 3
3. FT256           –page 4
4. FG484           –page 5
5. FG676           –page 6
6. FG1156          –page 7
7. FG672           –page 8
8. FG668           –page 9
9. FF680           –page 10
10. FF860           –page 11
11. FG900           –page 12
12. FF896           –page 13
13. CP56            –page 14
14. CP132           –page 15
15. FS48            –page 16
16. CS280           –page 17
17. CS48            –page 18

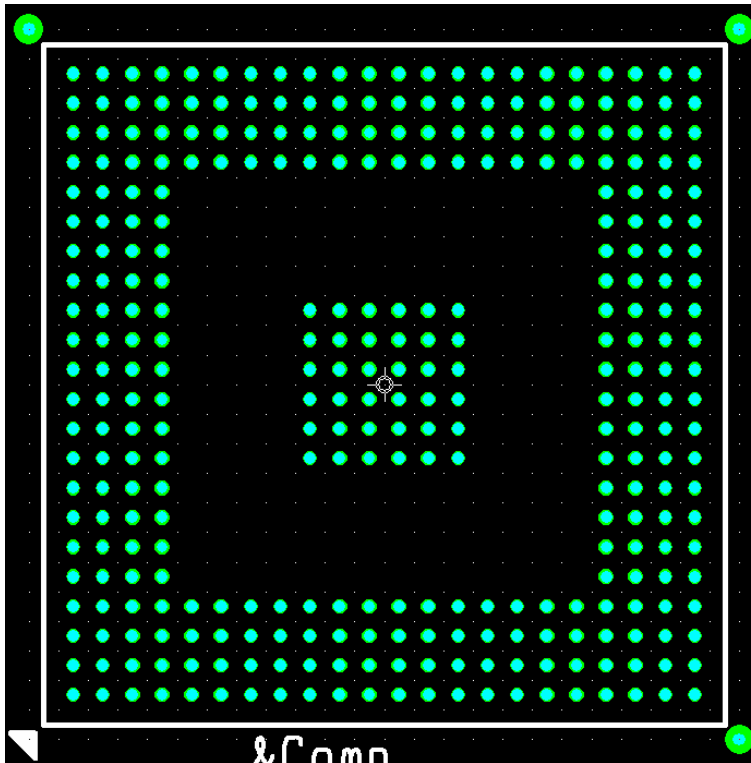


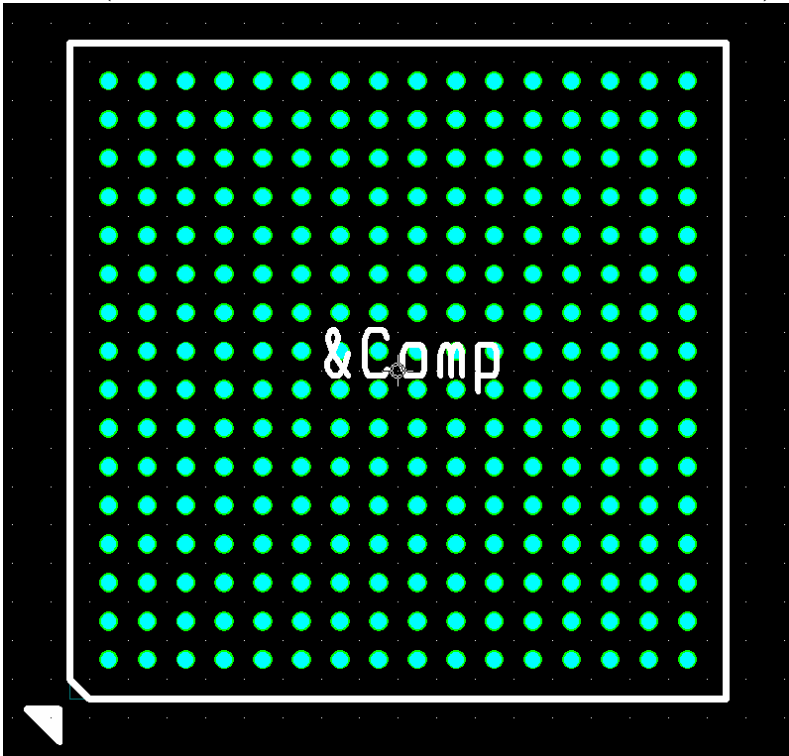
FG456 with Fiducials (XILINX\_FG456\_FID\_BGA22\_M\_1\_00\_REV1\_00)



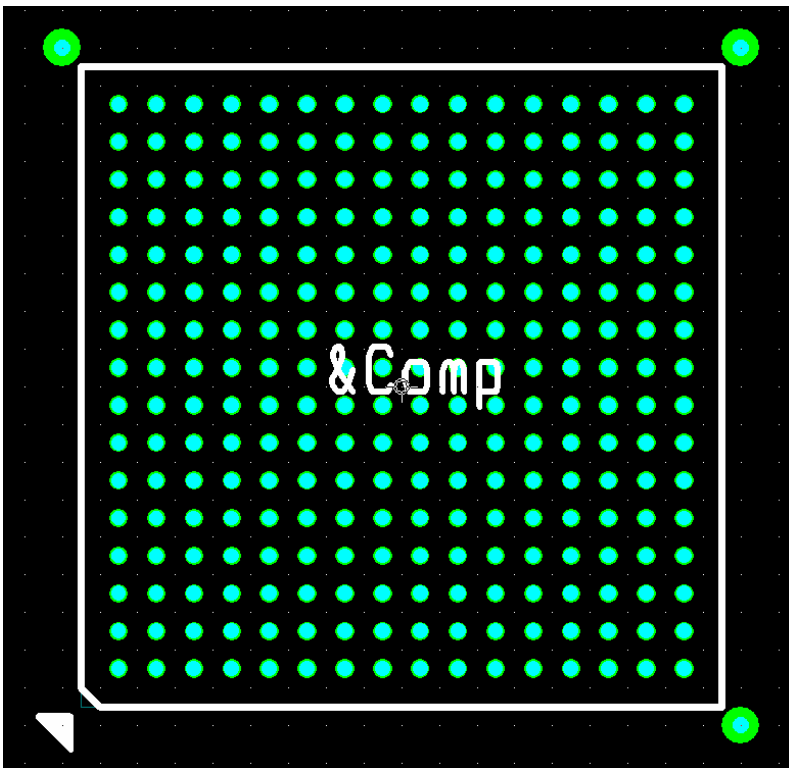


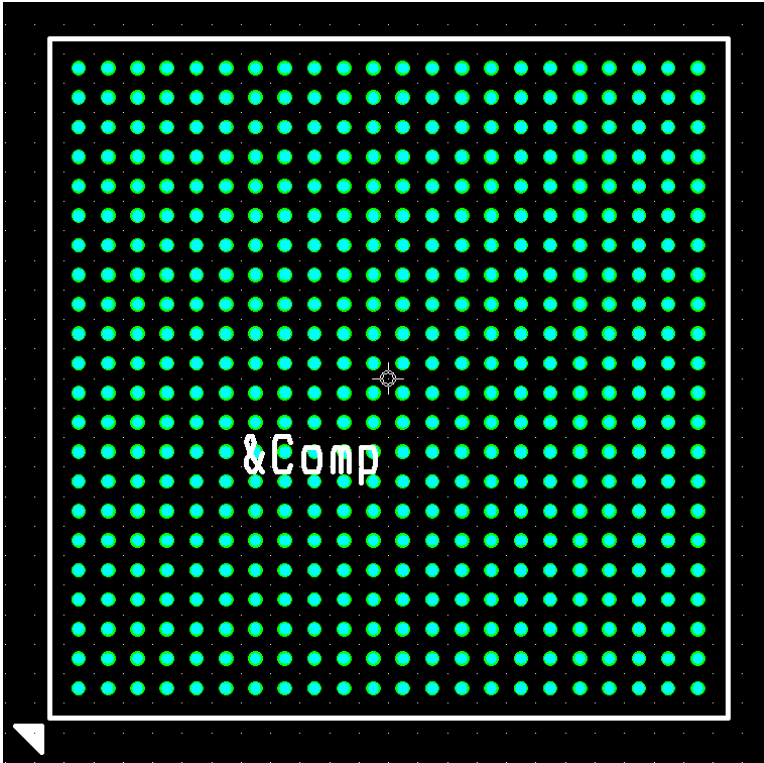
FG324 with Fiducials (XILINX\_FG324\_FID\_BGA22\_M\_1.00\_REV1\_00)



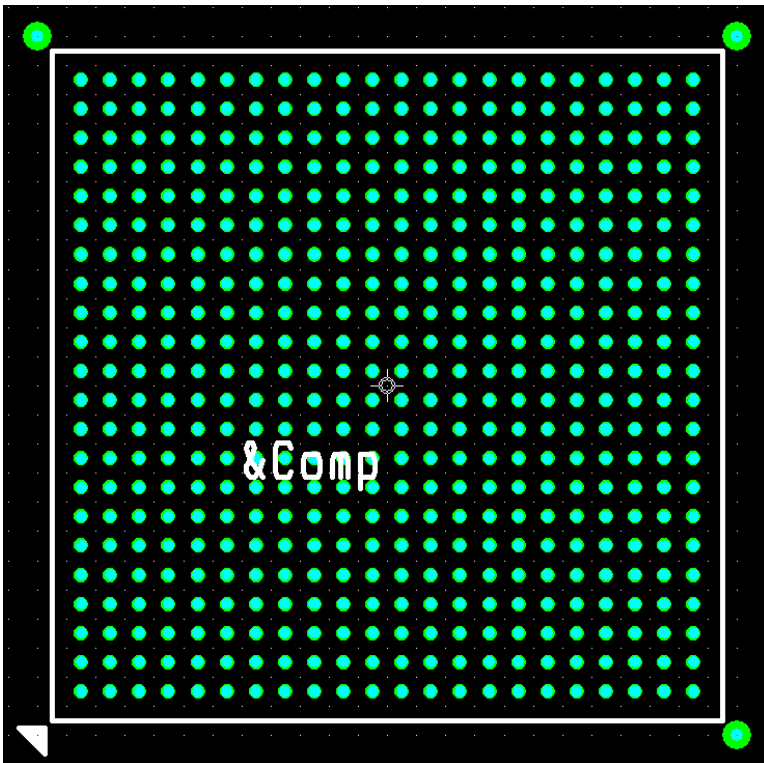


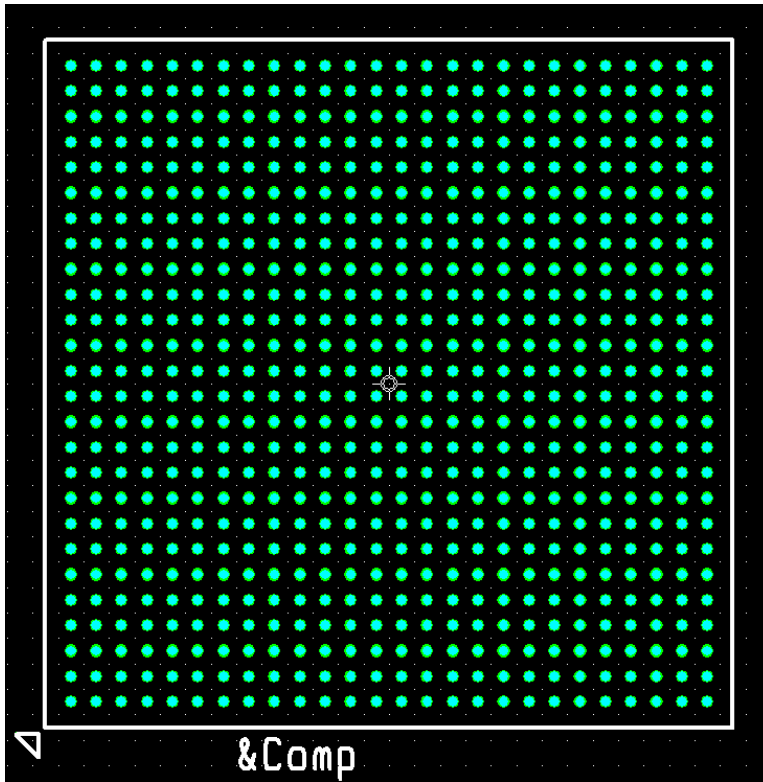
FT256 with Fiducials (XILINX\_FT256\_FID\_BGA16M\_1.00\_256\_REV1\_00)



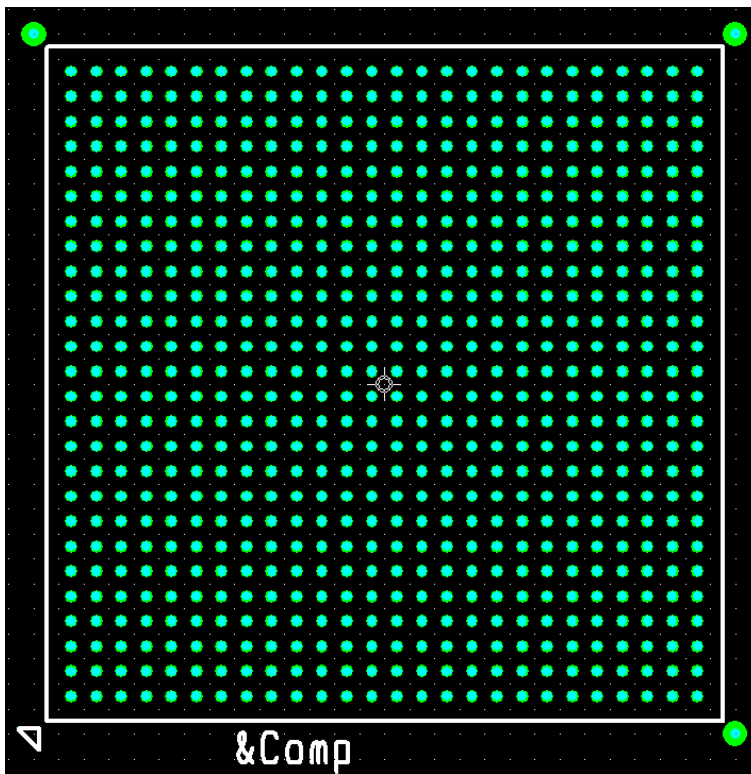


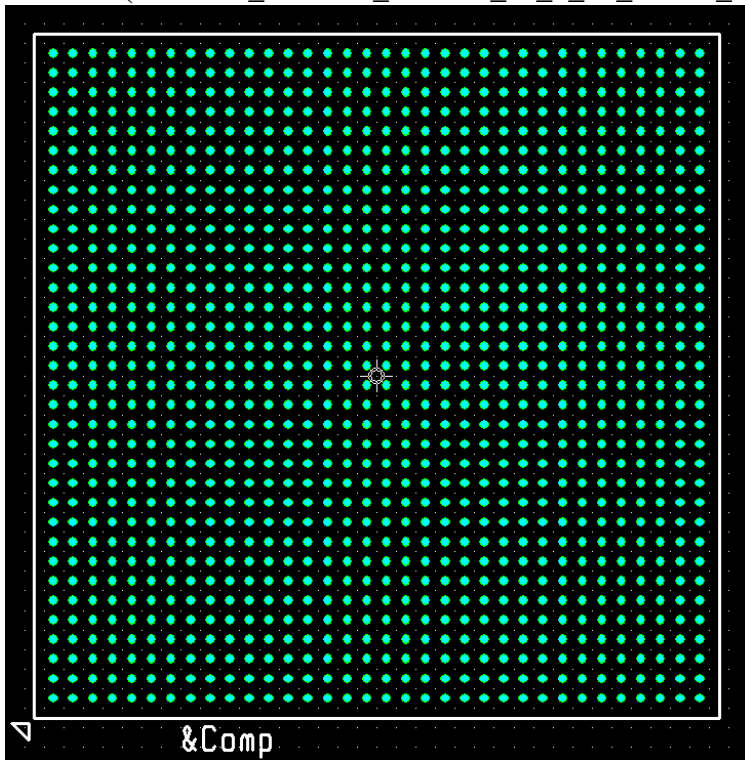
FG484 with Fiducials (XILINX\_FG484\_FID\_BGA22\_M\_1\_00\_REV1\_00)



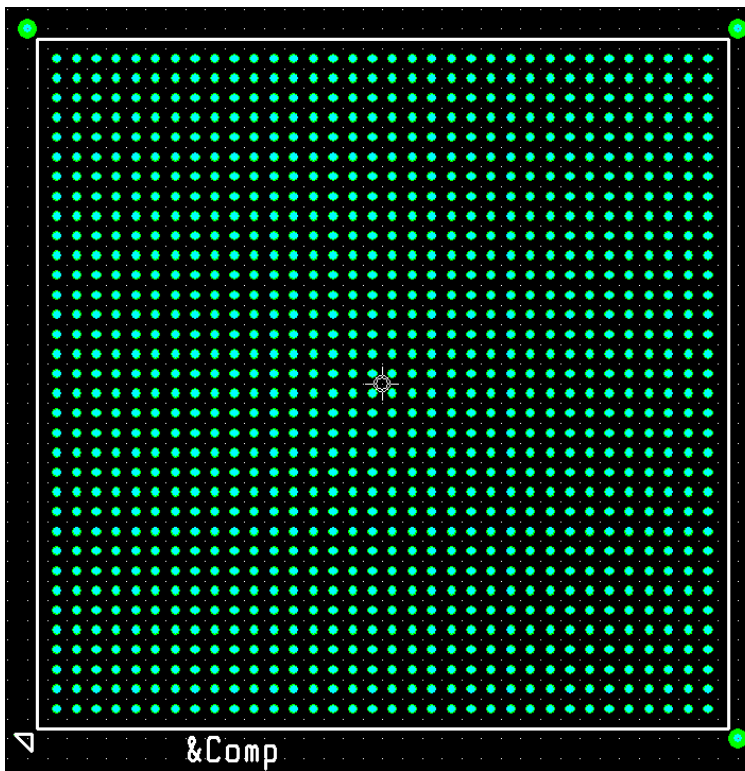


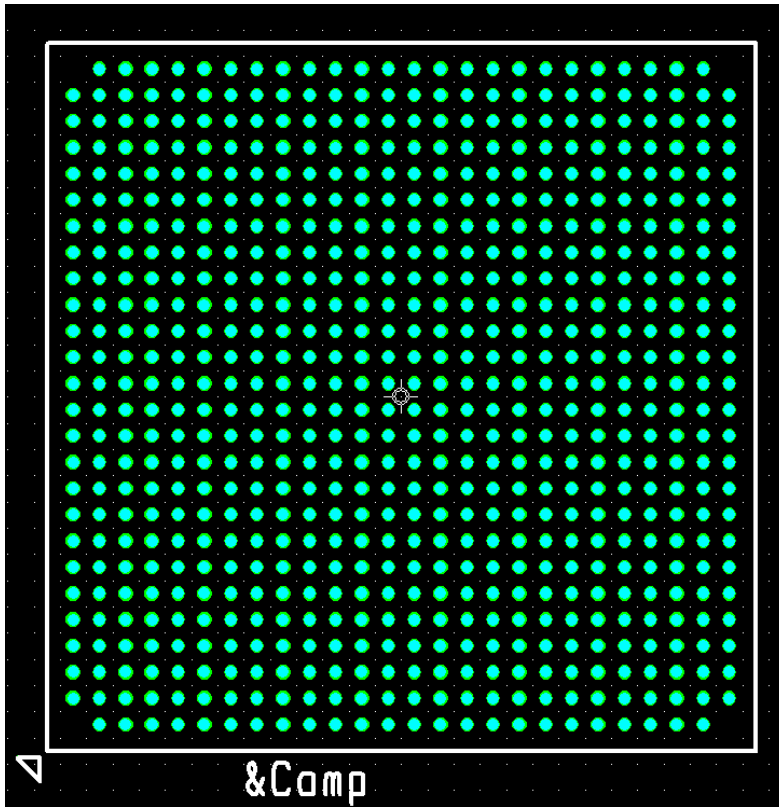
FG676 with Fiducials (XILINX\_FG676\_FID\_BGA26\_M\_1\_00\_REV1\_00)



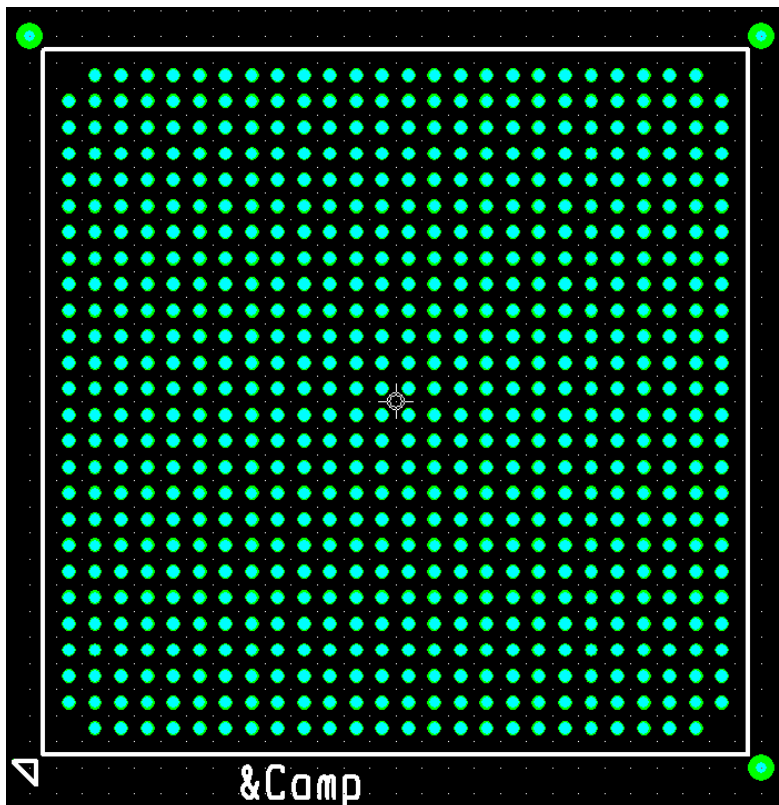


FG1156 with Fiducials (XILINX\_FG1156\_FID\_BGA34\_M\_1\_00\_REV1\_00)

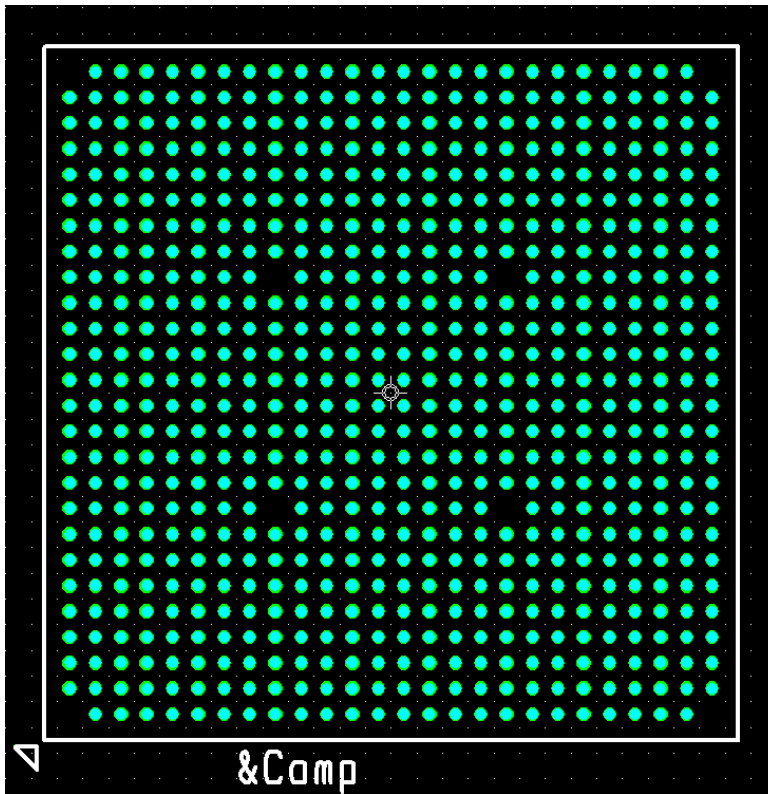




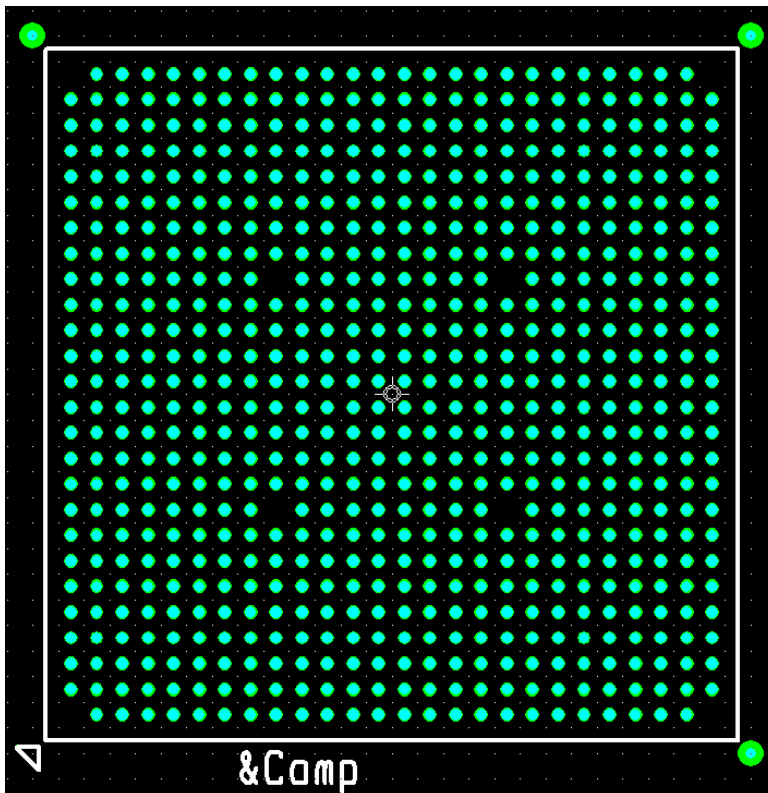
FG672 with fiducials (XILINX\_FG672\_FID\_BGA34\_M\_1\_00\_REV1\_00)



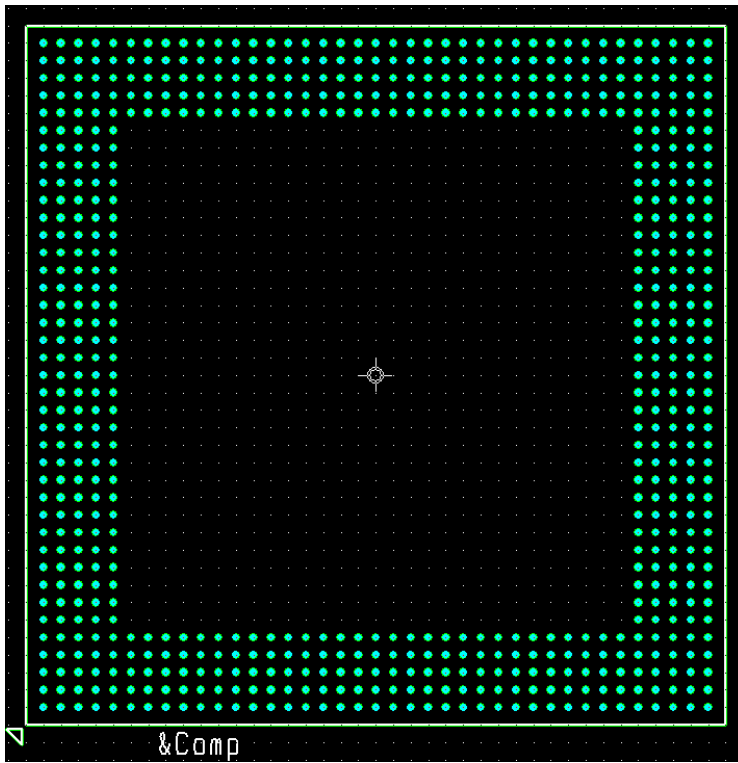
**FG668 (XILINX\_FG668\_BGA34\_M\_1\_00\_REV1\_00)**



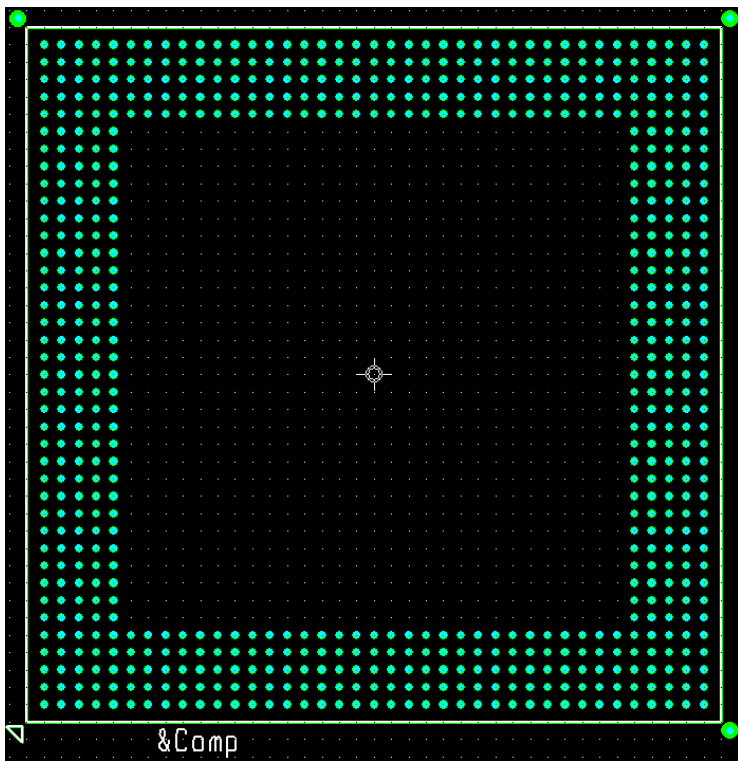
**FG668 with Fiducials (XILINX\_FG668\_FID\_BGA34\_M\_1\_00\_REV1\_00)**



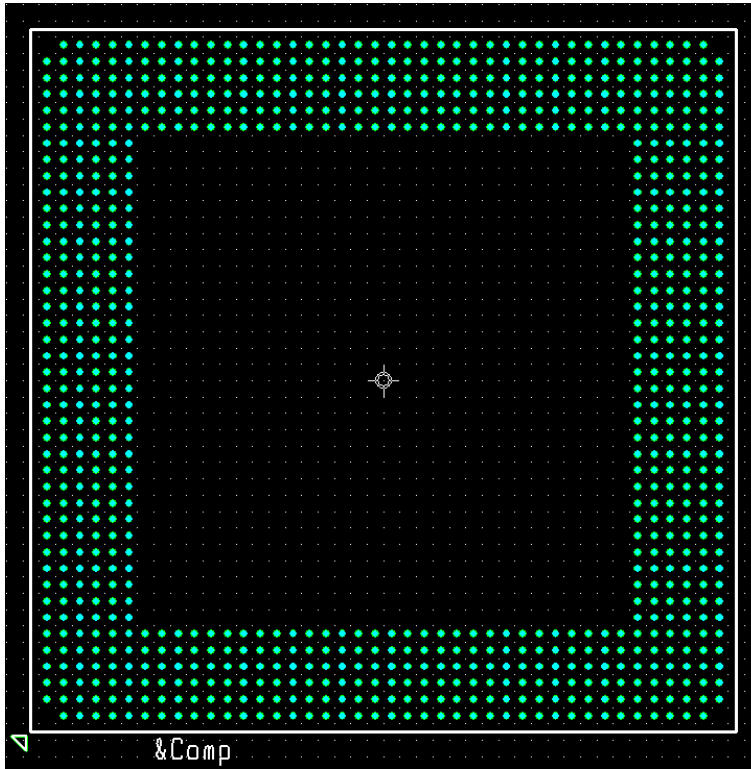
FF680 (XILINX\_FG680\_BGA39\_1\_00\_REV1\_00)



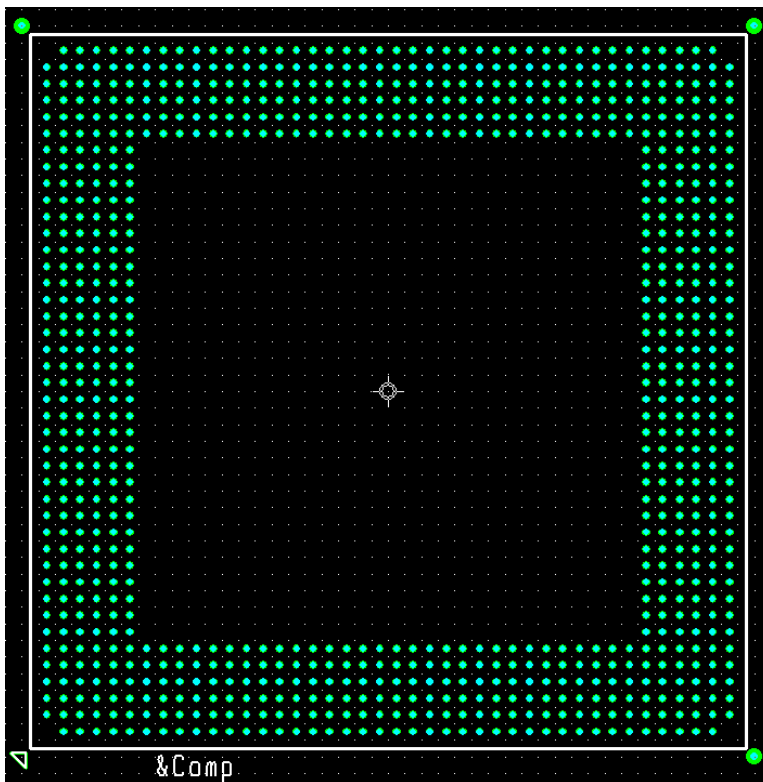
FF680 (XILINX\_FG680\_FID\_BGA39\_1\_00\_REV1\_00)



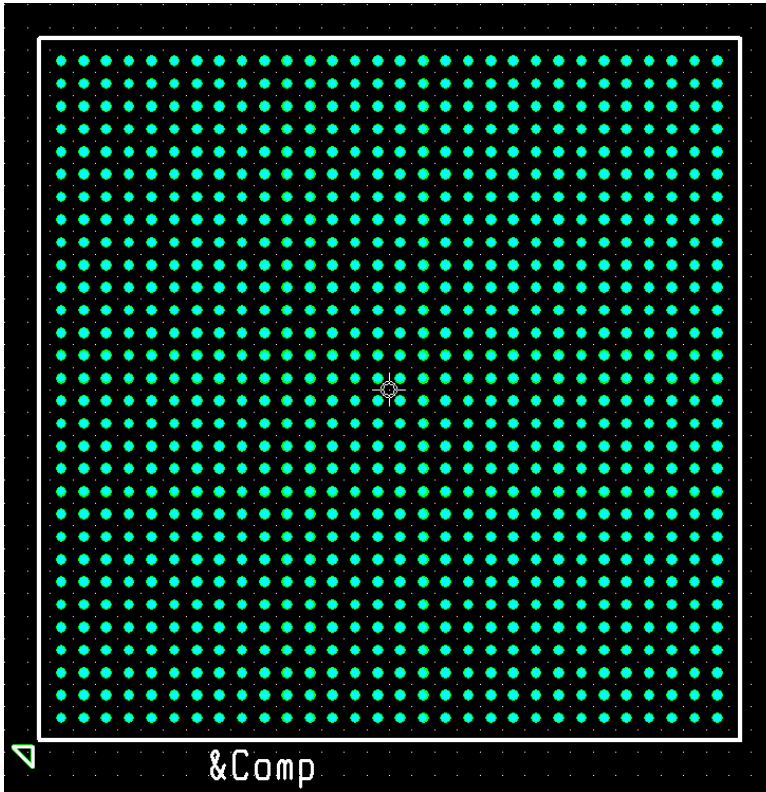
FF860 (XILINX\_FG860\_BGA42\_1\_00\_REV1\_00)



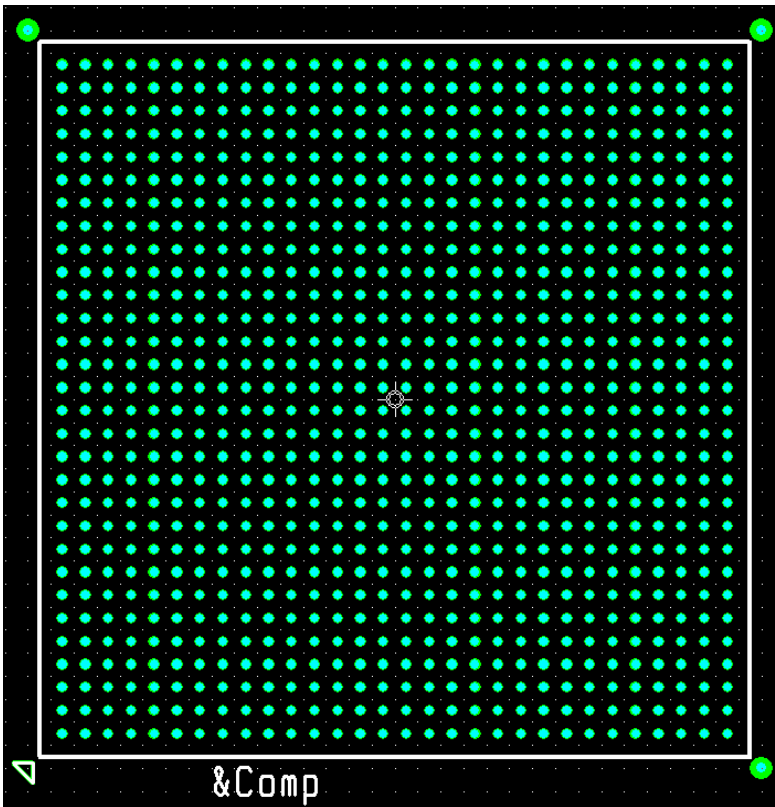
FF860 (XILINX\_FG860\_FID\_BGA42\_1\_00\_REV1\_00)



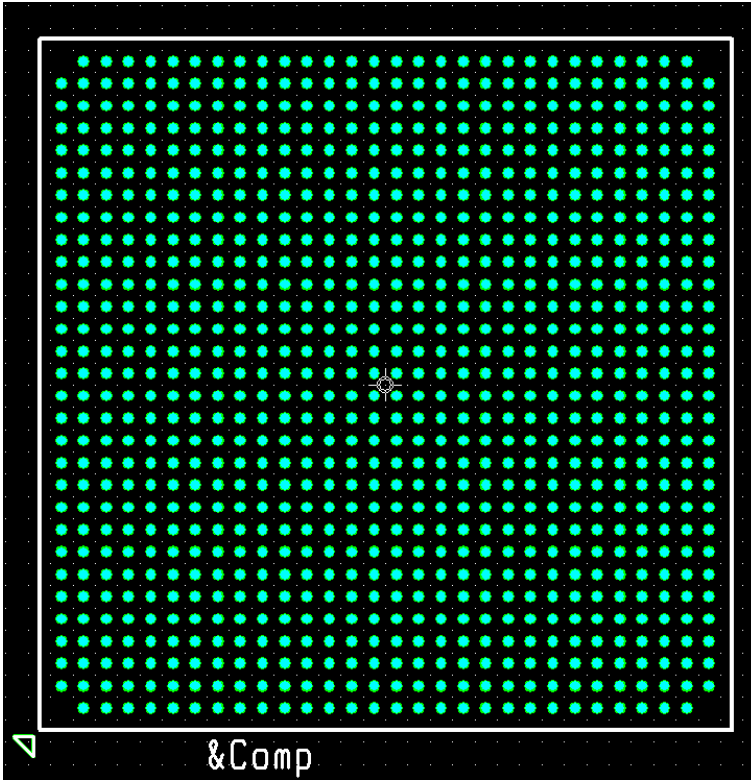
**FG900 (XILINX\_FG900\_BGA30\_M\_1\_00\_REV1\_00)**



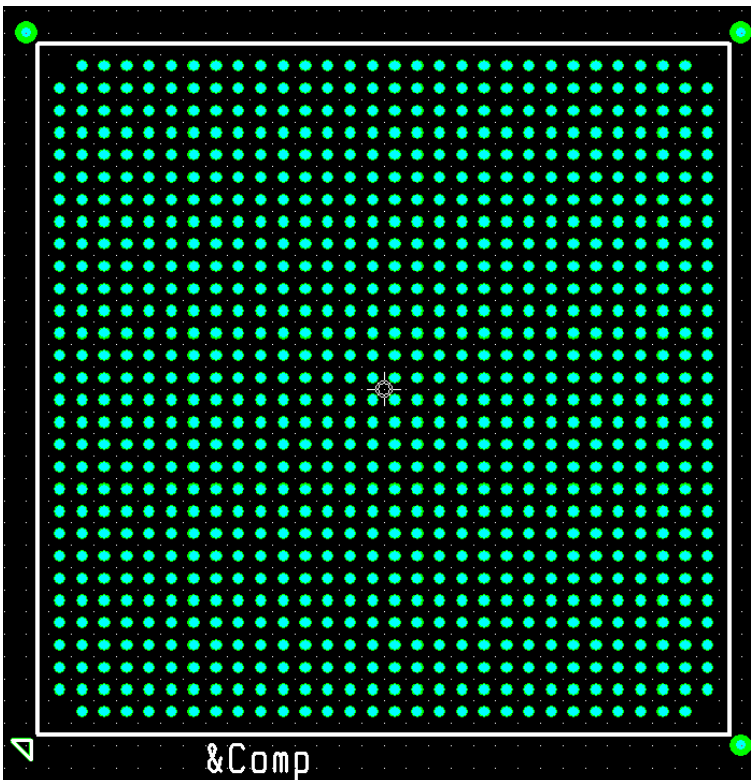
**FG900 with Fiducials (XILINX\_FG900\_FID\_BGA30\_M\_1\_00\_REV1\_00)**



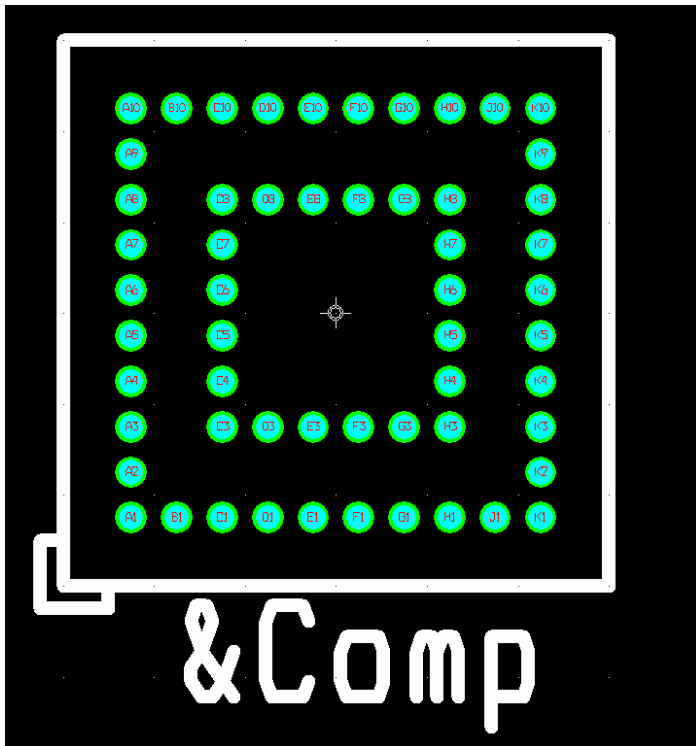
**FF896 (XILINX\_FF896\_BGA30\_M\_1\_00\_REV1\_00)**



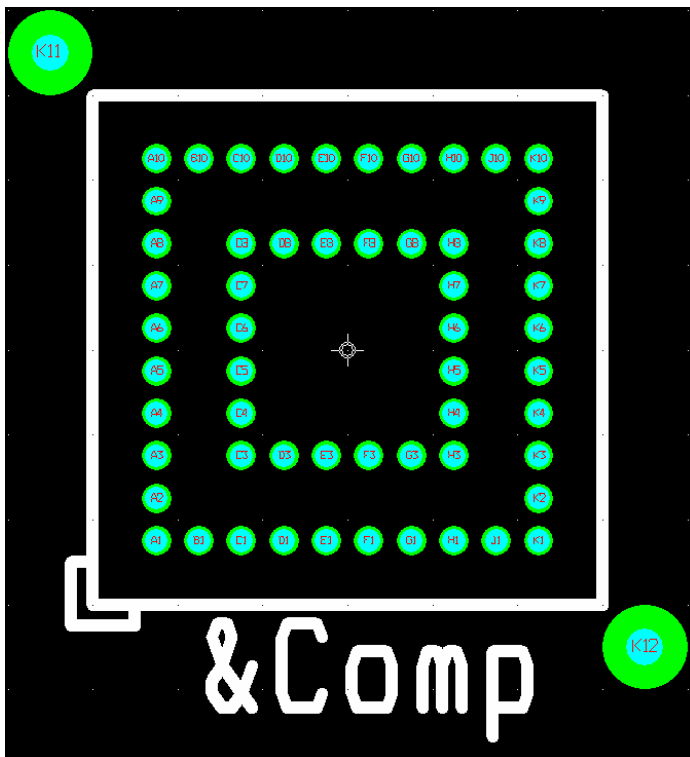
**FF896 with Fiducials (XILINX\_FF896\_FID\_BGA30\_M\_1\_00\_REV1\_00)**

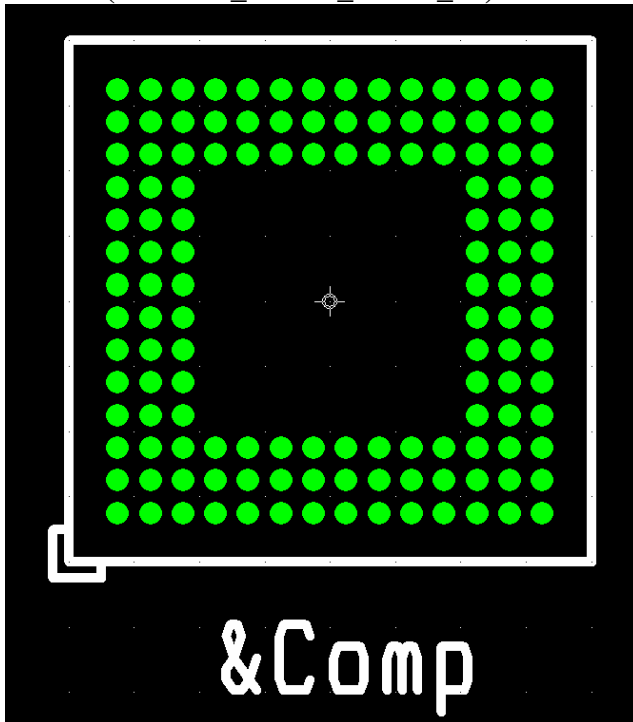


CP56 (XILINX\_CP56\_REV1\_00)

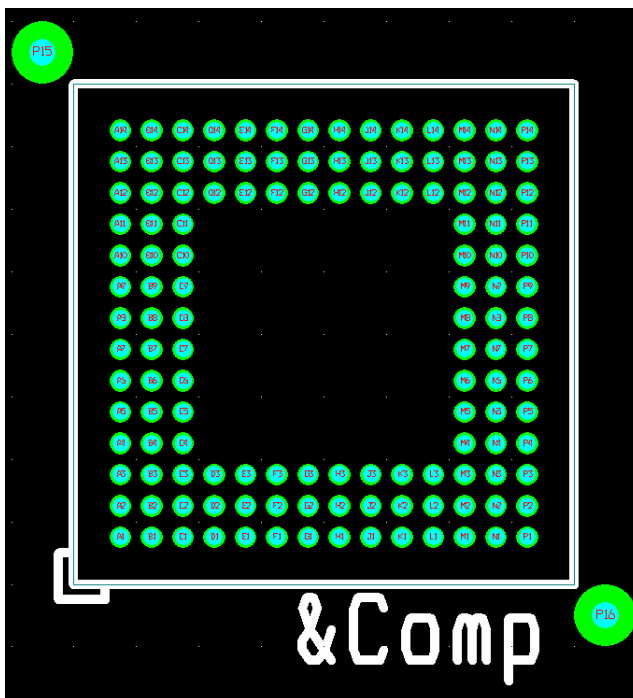


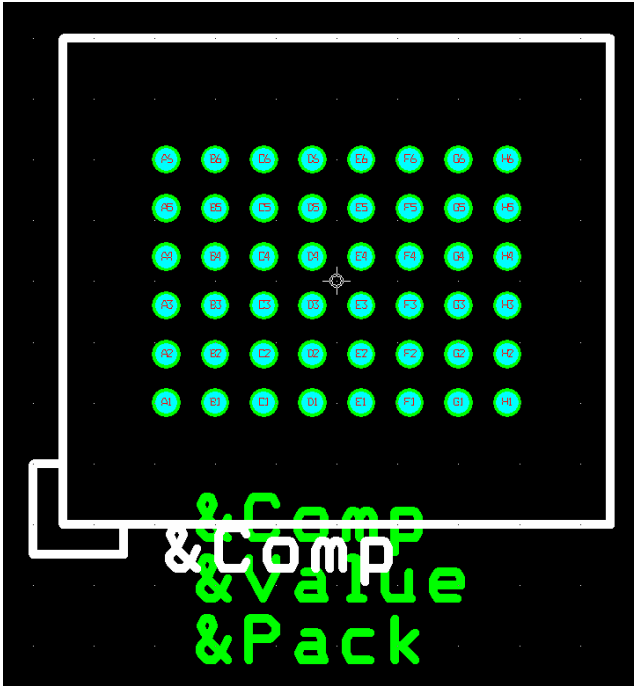
CP56 with Fiducials (XILINX\_CP56\_FID\_REV1\_00)



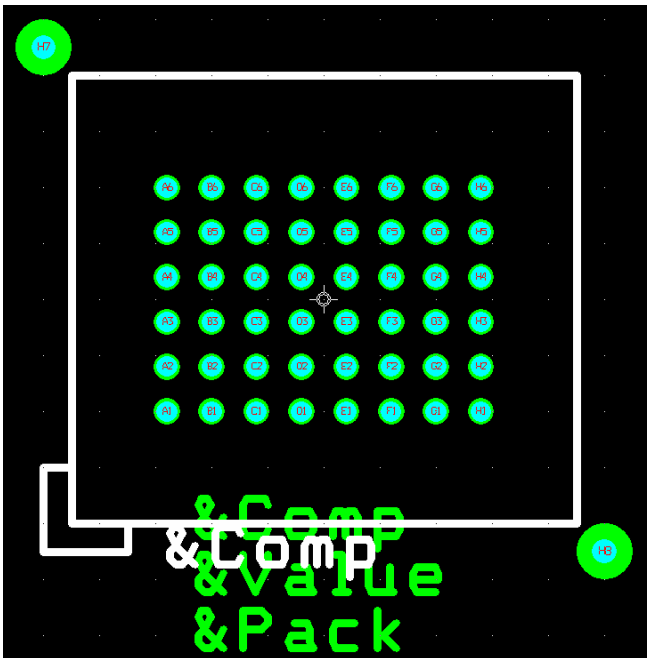


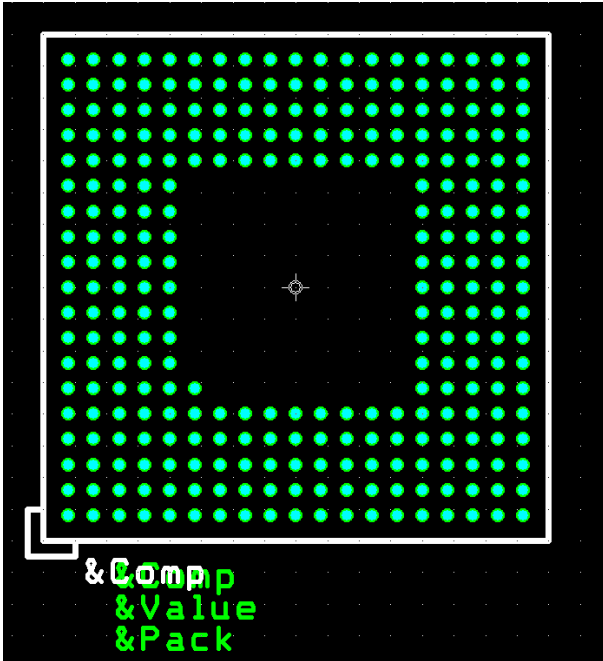
CP132 with Fiducials (XILINX\_CP132\_FID\_REV1\_00)



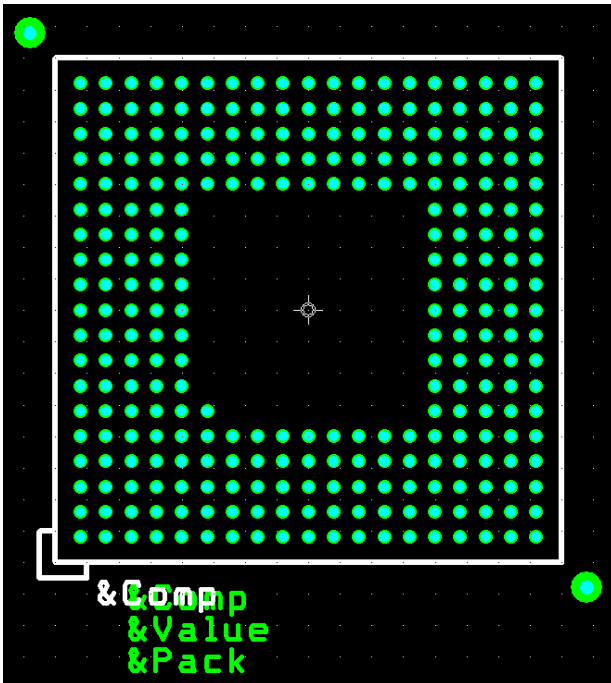


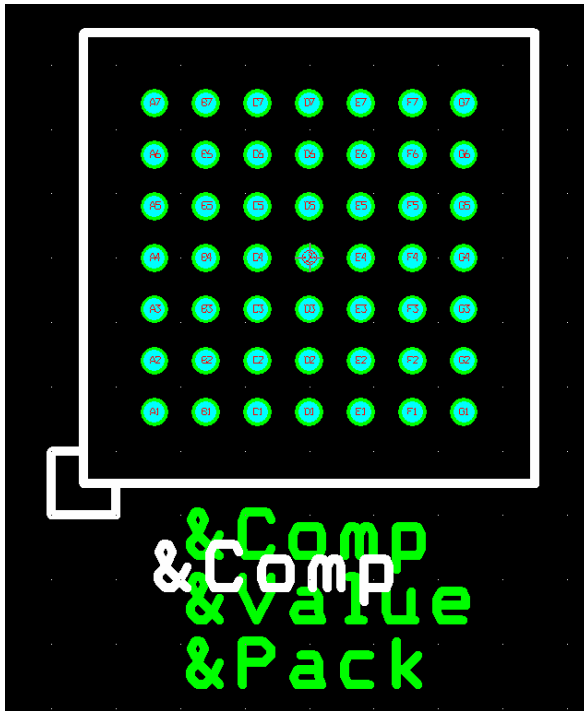
FS48 with Fiducials (XILINX\_FS48\_FID\_REV1\_00)





CS280 with Fiducials (XILINX\_CS280\_FID\_REV1\_00)





CS48 with Fiducials (XILINX\_CS48\_FID\_REV1\_00)

